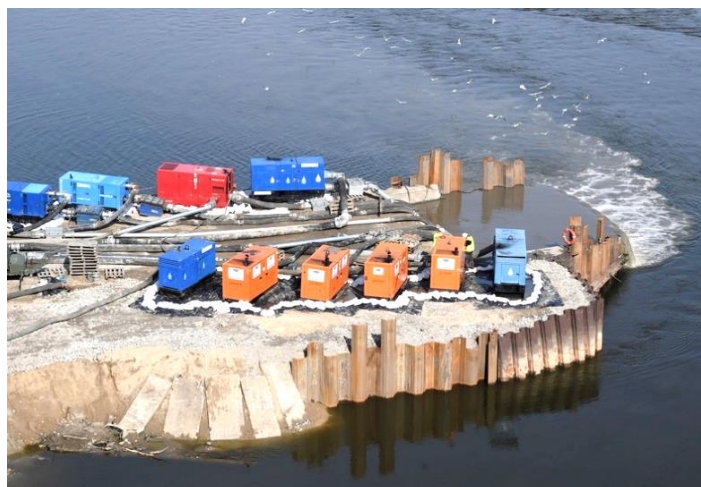


Mobile Pump Emergency Vistula River

Application market	Construction
Market segment	Canal & Well Renovation
Pumped medium	Wastewater
Pump product	Mobile Pump SuperBetsy
Country	Poland



Challenge

On August 27 and 28, 2019, an accident occurred in the two collection basins into which wastewater from the surrounding districts of Warsaw flows, and from there is fed under the Vistula River to the Czajka wastewater treatment plant. As a result, up to 3,000 litres per second of untreated wastewater flowed into the Vistula. To limit the already considerable environmental damage and to be able to repair the damage to the plant in the long term, a reliable emergency solution was urgently needed.

Solution

On a pontoon bridge built over the Vistula River, a replacement pipeline was laid to transport wastewater from the collection basins to the Czajka wastewater treatment plant. Six **SuperBetsy** mobile pumping units, among others, were used to feed raw sewage through this emergency pipeline. The temporary arrangement went into operation on September 9, 2019, and upon reaching its full conveyance capacity on September 14, the flow of untreated wastewater into the river was stopped. Repairs to the damaged feed system under the Vistula riverbed were completed in November 2019.

Benefits

The virtually clog-free Hidrostał Screw Centrifugal Pump, with its excellent suction capacity and high wear resistance easily withstood the extreme conditions of the application, the difficult task was solved satisfactorily. Hidrostał is typically used when other pumping systems reach or exceed their limits. The use in the **SuperBetsy** mobile pump system makes the Hidrostał pump an almost unbeatable device.

Quantity of units sold	6 pcs. Mobile Pumps SuperBetsy type D (Diesel drive)
Pump type	D B300-FHD with integrated Screw Centrifugal Pump F10K-HD3R
Motor data	max. 46 kW / speed range variable up to 1'500 rpm
Material combination	Pump: Cast iron pump body, ductile iron impeller and Hidrohard wear parts
Duty point	Flow : up to 3,100 litres per second / Head : up to 33 meters
In operation since	from September to November 2019 (rental period)